

Course setting using OCAD 8

An introduction

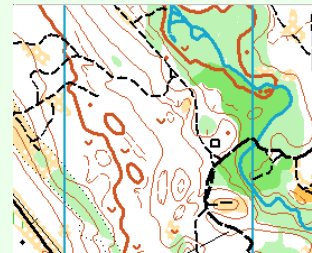
~

Neil Crickmore

Based on an original by Teresa Winn and Jim Baker

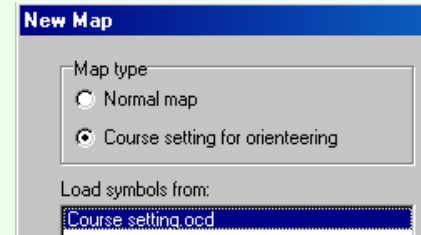
What you need

- A computer running Windows
- OCAD 8 or OCAD 8 Demo
(<http://www.ocad.com>)
- An OCAD map (or possibly a scanned image of a map)
- Your courses

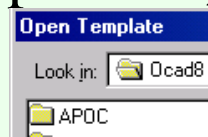


The overall steps

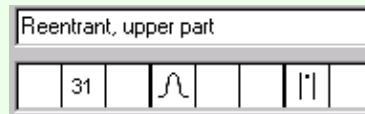
- Create a new OCAD course file
 - (Don't draft on the map itself!)



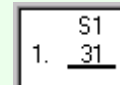
- Select the map to use



- Enter all the locations and descriptions on the master map



- Create courses from the controls



- Position control descriptions



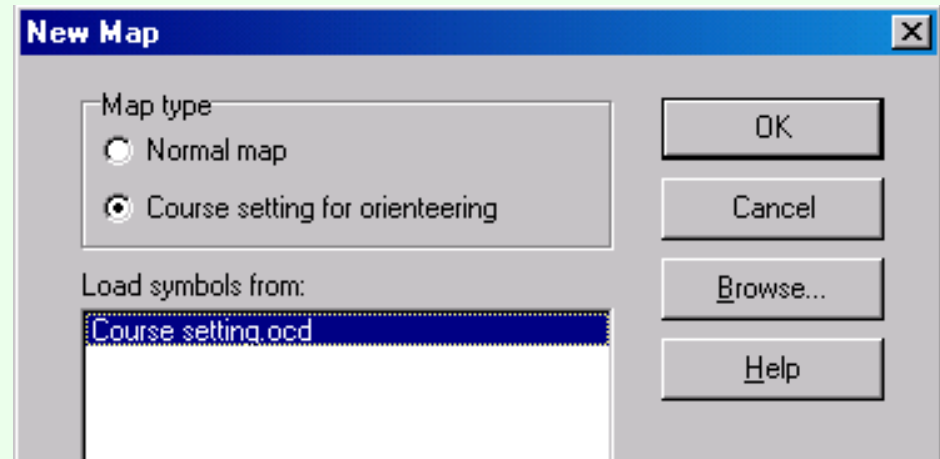
- Do any needed map layout



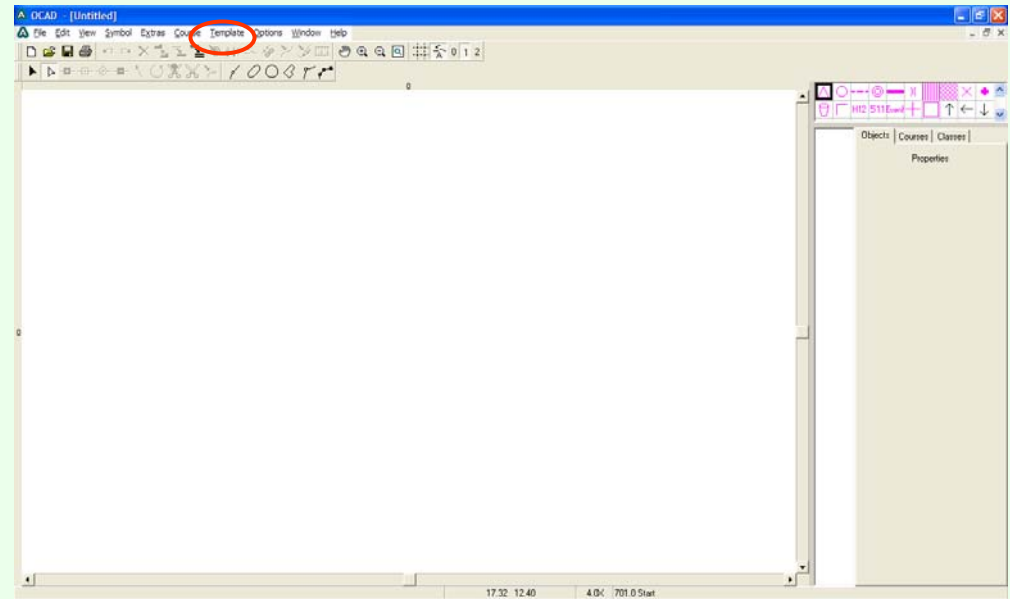
- Print 

Create a new OCAD course file

- File > new
- Click OK

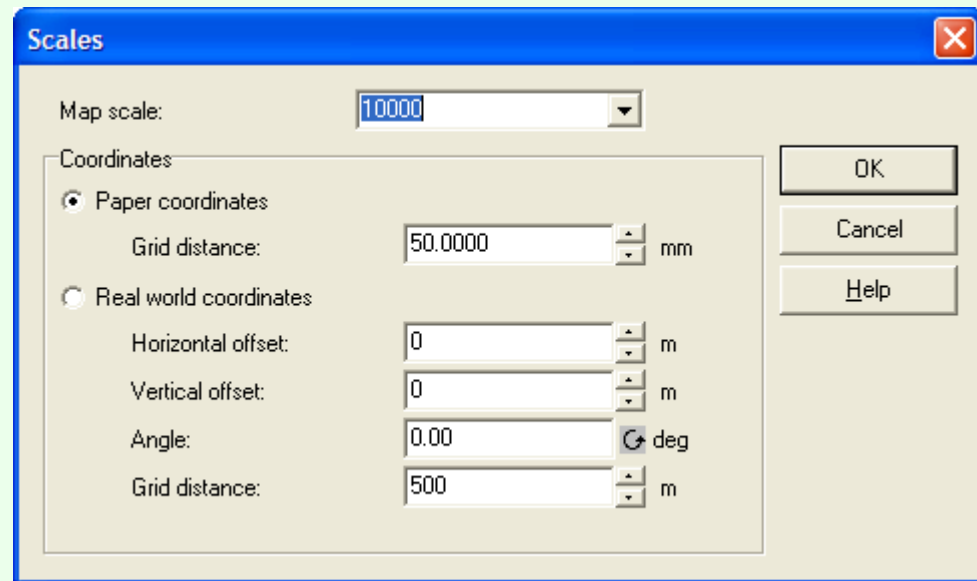


- When empty window appears.....
- Template > Open...
- Select the OCAD map (or possibly bitmap)



Checking the scale

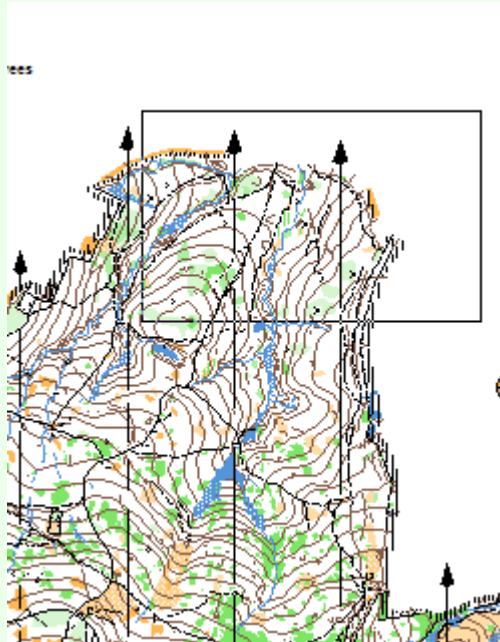
- Options > Scale



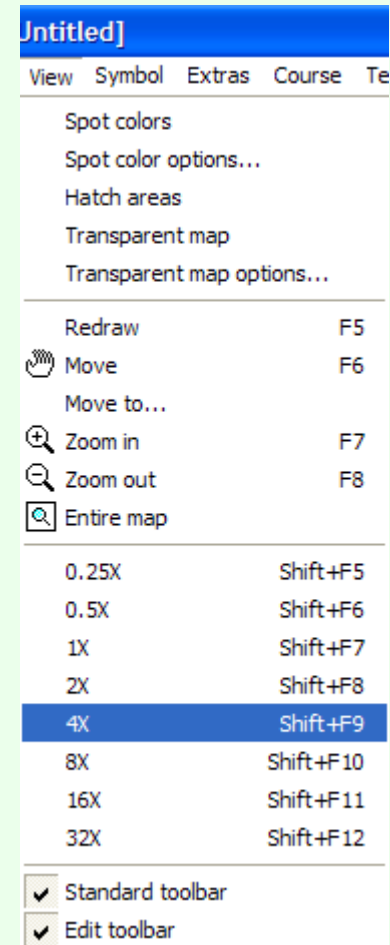
- Make sure that the map scale is the same as the map you are using as the template

Viewing the map

- View > entire map
- Or view > magnification factor
- Or use icons

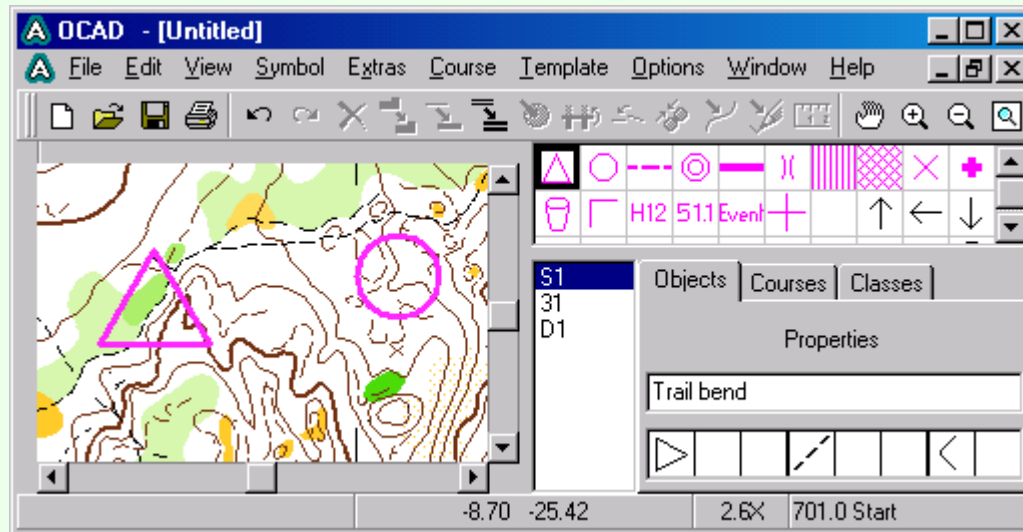


Position box over region to be displayed at x4 magnification



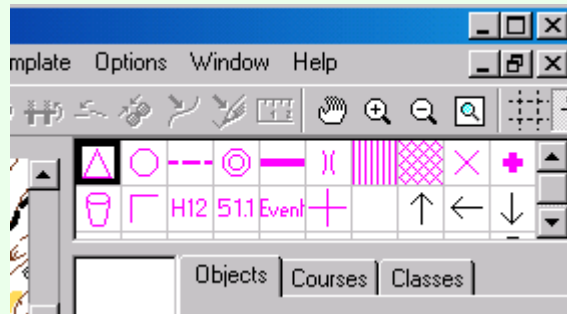
Start entering items on the master map

- Start(s)
- Controls
- Finish(es)

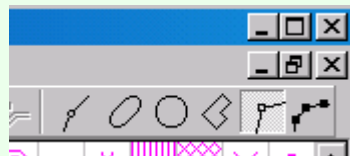


For example, to pick a start...

- In the upper right corner is a Symbol Box. Select the Start symbol (make sure the objects tab is selected)

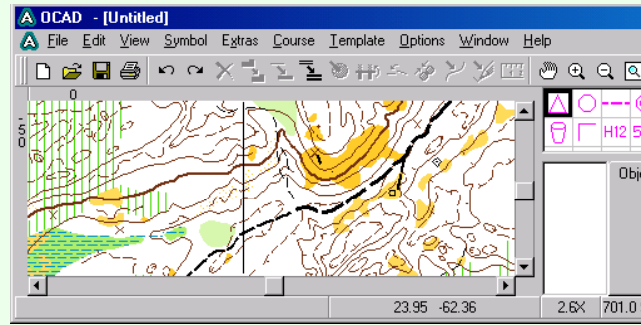


- On the toolbar, select Straight Line mode or any other “mode”, or right-click and select Point Object

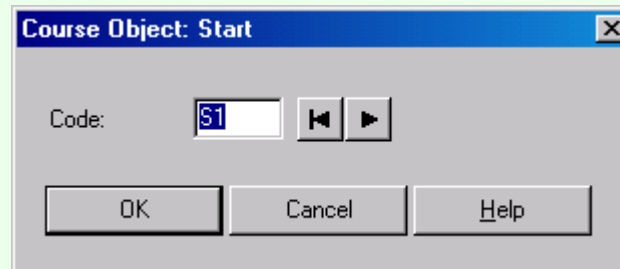


For example, to pick a start... (cont.)

- On the map, click on the location of this start

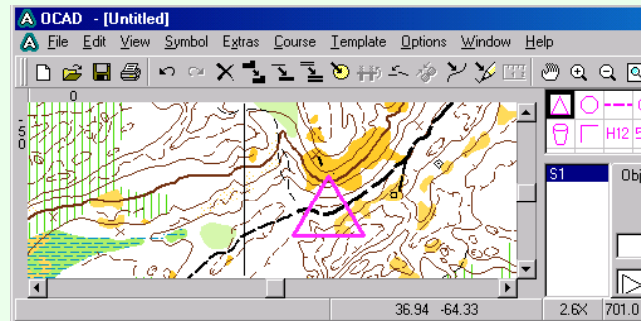


- A dialog box will ask you to choose a name for this start. (Defaults to S1 for the first start, S2 for the second, etc.)

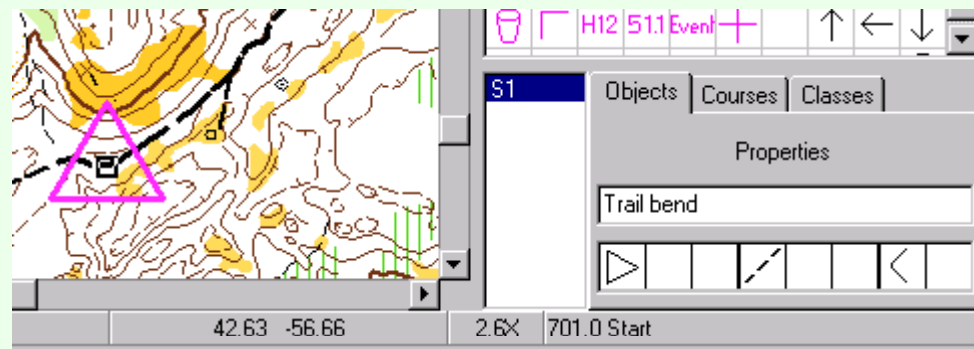


For example, to pick a start... (cont.)

- A start triangle will appear on the map where you clicked

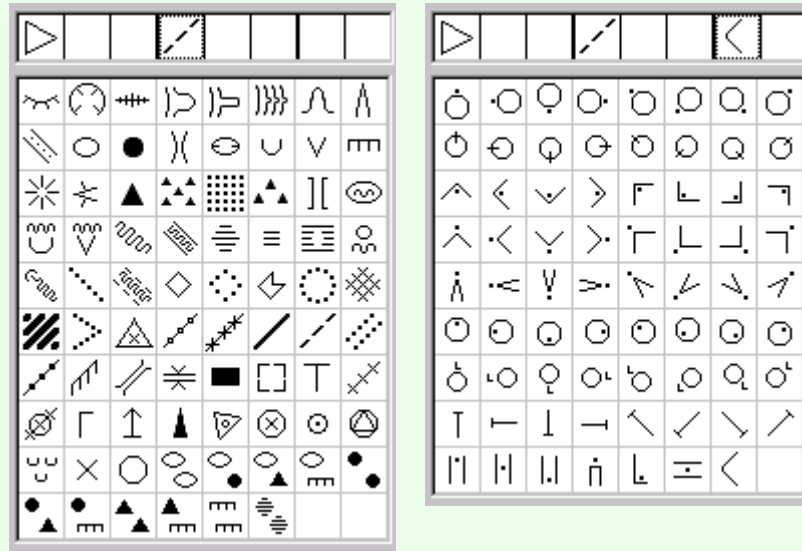


- Now enter the description for this start (IOF and/or English) in the fields to the right



For example, to pick a start... (cont.)

- To enter an IOF description, click on each box, and select from the available options below






- To enter an English description, type it in the box above the IOF description




Repeat procedure for controls

- It's easiest to start with the lowest number control, and proceed in order
- Remember to take care if your numbering has gaps
- Don't forget descriptions
- Enter all controls for all courses

If you need to move a control

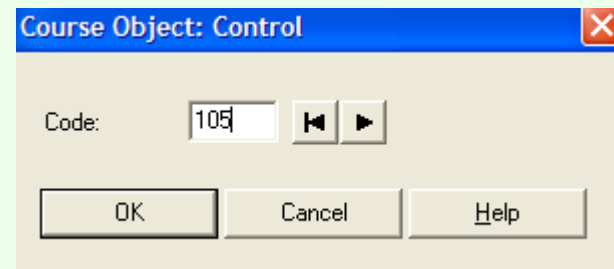
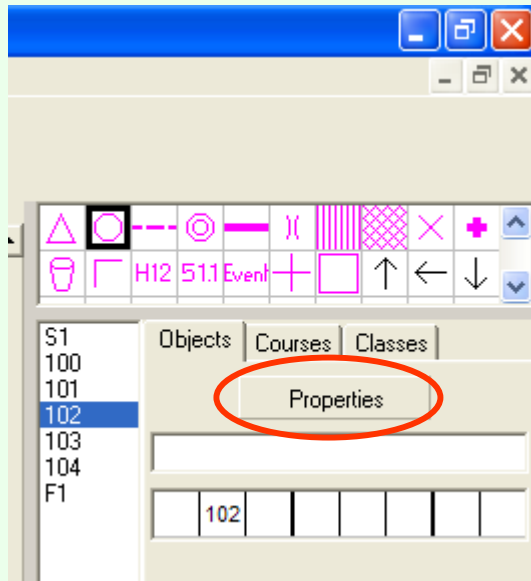
- ...or start or finish or description sheet...
- Select the Edit Object or Edit Point tool from the toolbar 
- Select the control (or start, etc.) by clicking on it 
- A square “handle” will appear 
- Drag the handle to where you want the control (start, etc.) and release
- Remember to update the description if needed

If you need to delete a control

- ...or start or finish or description sheet...
- Select the Edit Object or Edit Point tool from the toolbar 
- Select the control (or start, etc.) by clicking on it 
- A square “handle” will appear 
- Press the Delete key

If you need to renumber a control

- Select the control you wish to renumber
- Click on the properties box
- Type in the new number

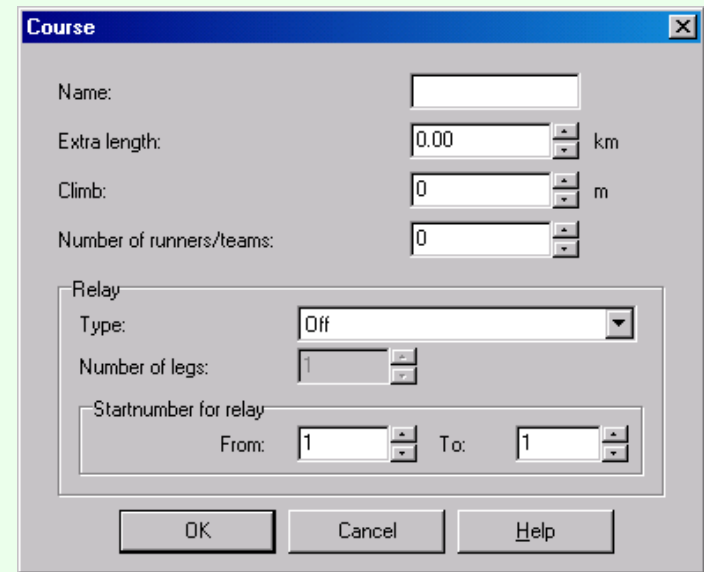
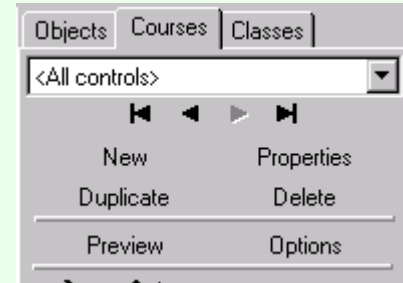


We're just entering courses now?

- Yes, but now it's a breeze
- You have everything entered in the master map
- Now you just need to select the controls (and start and finish) for each course, and their order
- And maybe enter the climb
- And oh yes, name each course

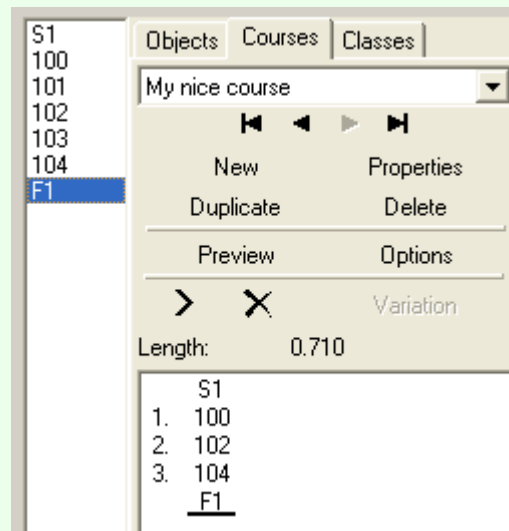
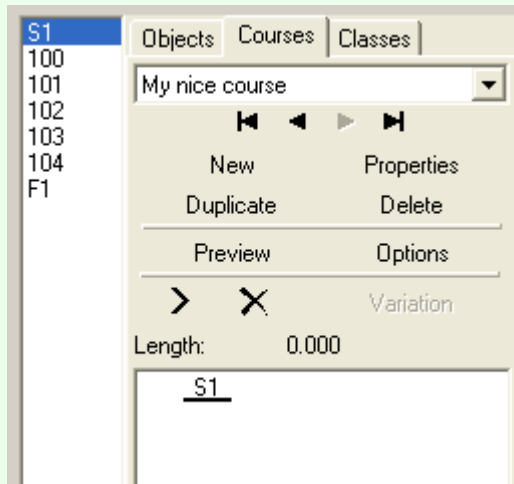
Create a course

- Change to the Courses tab
- And click New
- A dialog box will appear
- Enter a course name
- Enter the climb (if known)
- If there's a taped route to a remote start, enter the length of that route as Extra Length
- If you want to see how many orienteers will use each control (control loading), enter the number of expected course participants


A screenshot of a 'Course' dialog box. It has a blue title bar with 'Course' and a close button. The dialog contains several input fields: 'Name' (empty), 'Extra length' (0.00 km), 'Climb' (0 m), and 'Number of runners/teams' (0). There is a 'Relay' section with a 'Type' dropdown set to 'Off', 'Number of legs' (1), and a 'Startnumber for relay' section with 'From' and 'To' both set to 1. At the bottom are 'OK', 'Cancel', and 'Help' buttons.

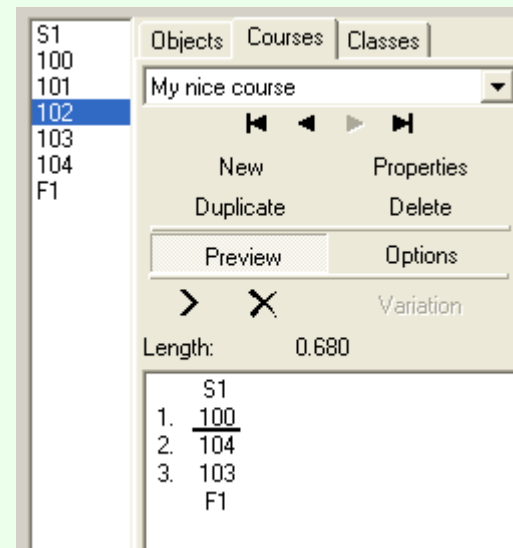
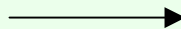
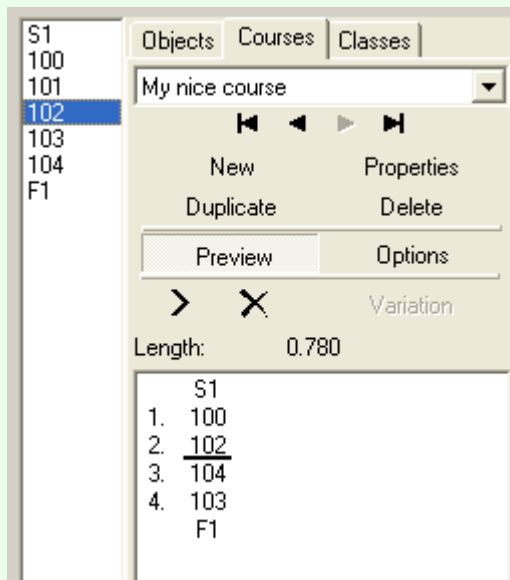
Select the start, controls and finish

- In the master list of objects, double-click on the desired start to add it to the course
- Then do the same for each control, in order, and finally the finish
- Note that controls can also be selected by double clicking on the desired control on the map.



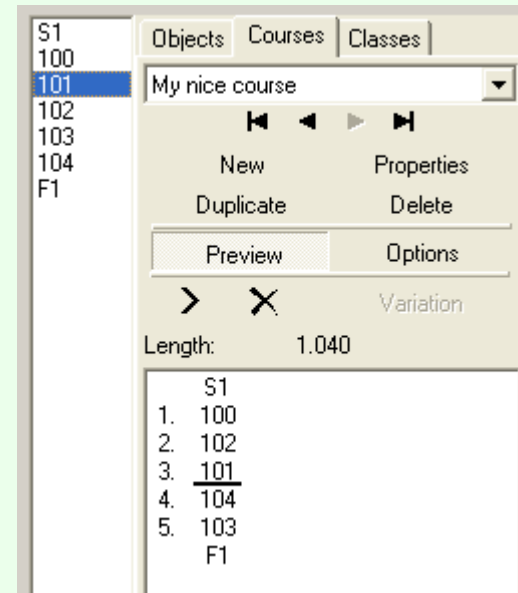
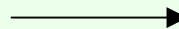
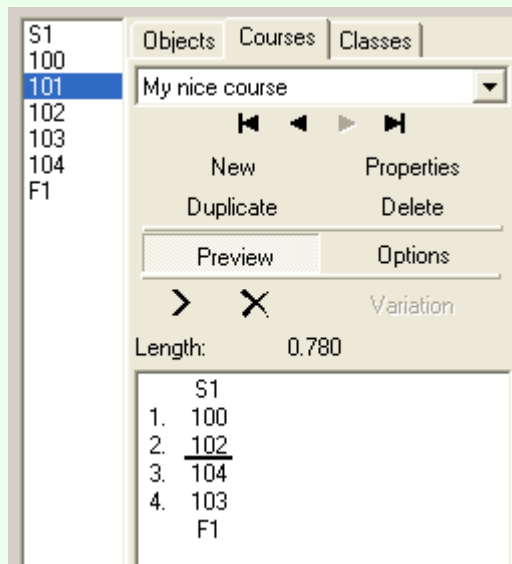
Deleting objects

- To delete a control (or start or finish), place the cursor below the control to be deleted (eg 102) and then press the big X button  above



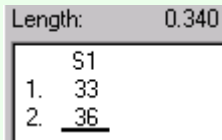
Inserting objects

- To insert a control (or start or finish), place the cursor between the controls where you wish to insert a control. Double click on the control to insert



Fun facts

- Watch the length update as you add controls

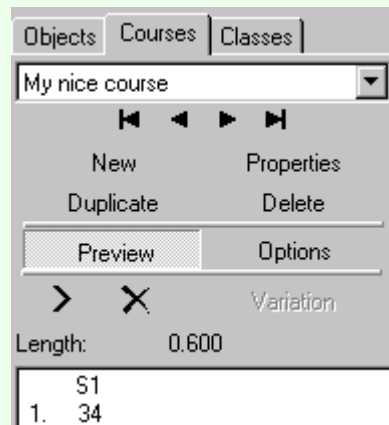


Length:	0.340
	S1
1.	33
2.	<u>36</u>

- Watch the course taking form on the map to the left
- You can add the same control several times in a course, if desired (though not twice in a row)

Positioning the control numbers

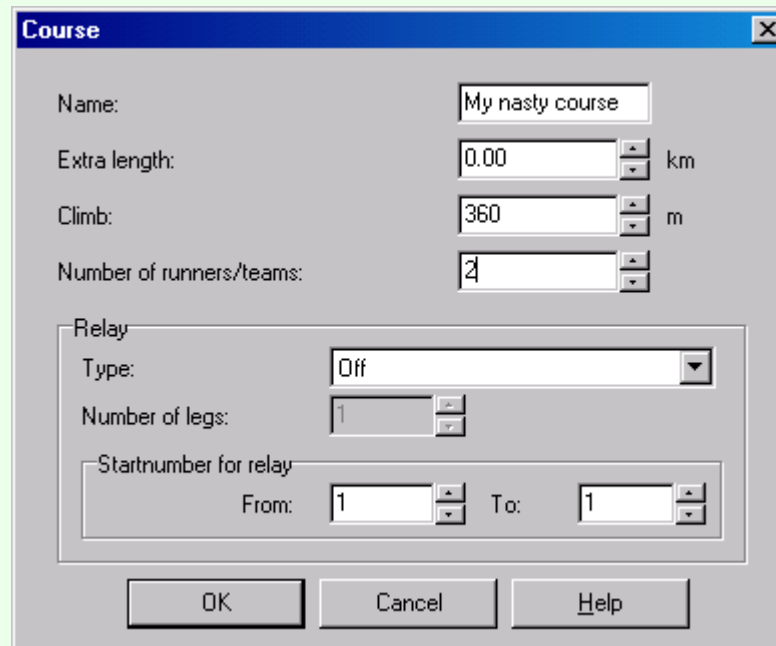
- Select the Preview mode by pressing Preview



- Select each control number as you'd select any object, and drag it to the desired spot
- Go back to normal mode by pressing Preview again

Rinse, lather, repeat

- Repeat for the remaining courses

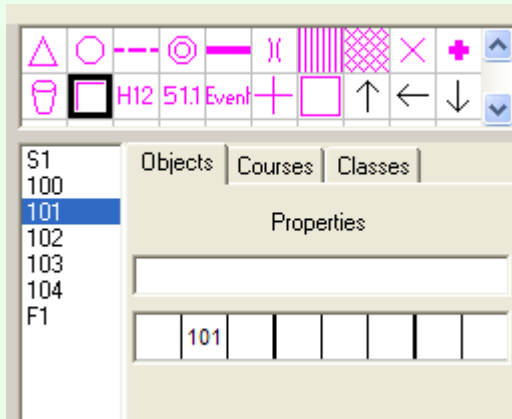


The image shows a dialog box titled "Course" with a close button (X) in the top right corner. The dialog contains several input fields and a "Relay" section. The "Name" field contains "My nasty course". The "Extra length" field contains "0.00" with "km" to its right. The "Climb" field contains "360" with "m" to its right. The "Number of runners/teams" field contains "2". The "Relay" section is enclosed in a rounded rectangle and contains a "Type" dropdown menu set to "Off", a "Number of legs" field set to "1", and a "Startnumber for relay" section with "From:" and "To:" fields, both set to "1". At the bottom of the dialog are three buttons: "OK", "Cancel", and "Help".

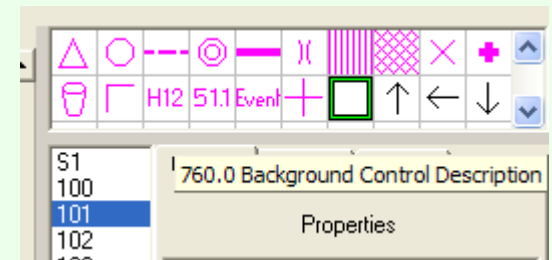
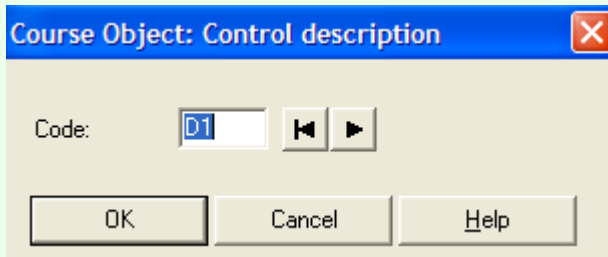
Name:	My nasty course
Extra length:	0.00 km
Climb:	360 m
Number of runners/teams:	2
Relay	
Type:	Off
Number of legs:	1
Startnumber for relay	
From:	1
To:	1

Adding control descriptions

- Select the Objects tag and then click on the description placement icon

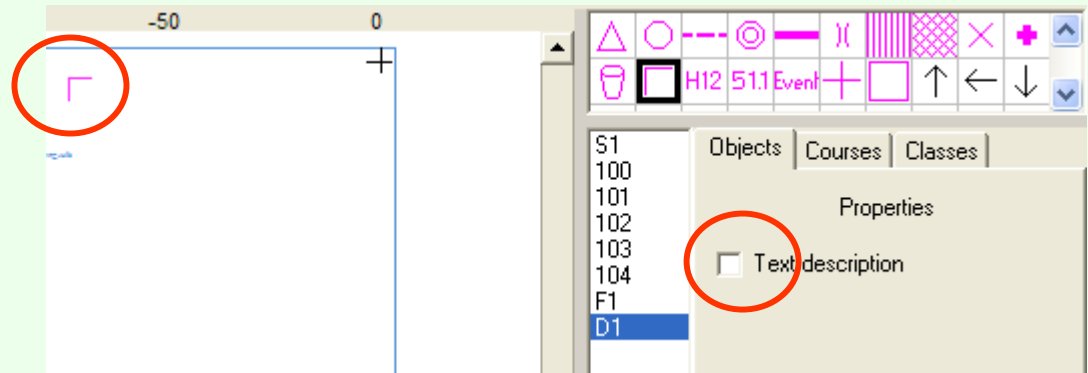
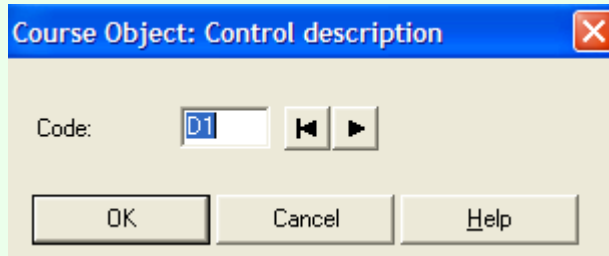


Place this object on the map where it will mark the top left hand corner of the descriptions. The object will be given a name (eg D1). If you need to print on top of some existing map create a white background using the control background object



English and/or IOF descriptions

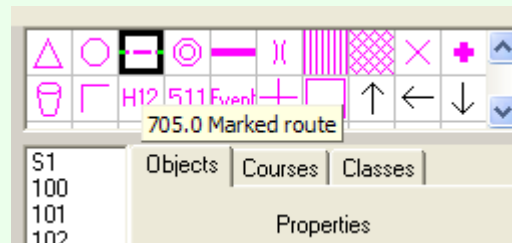
- When you click OK to place the description object you get to chose to use text descriptions



- You could have two sets of descriptions eg
- D1 – text, D2 - IOF

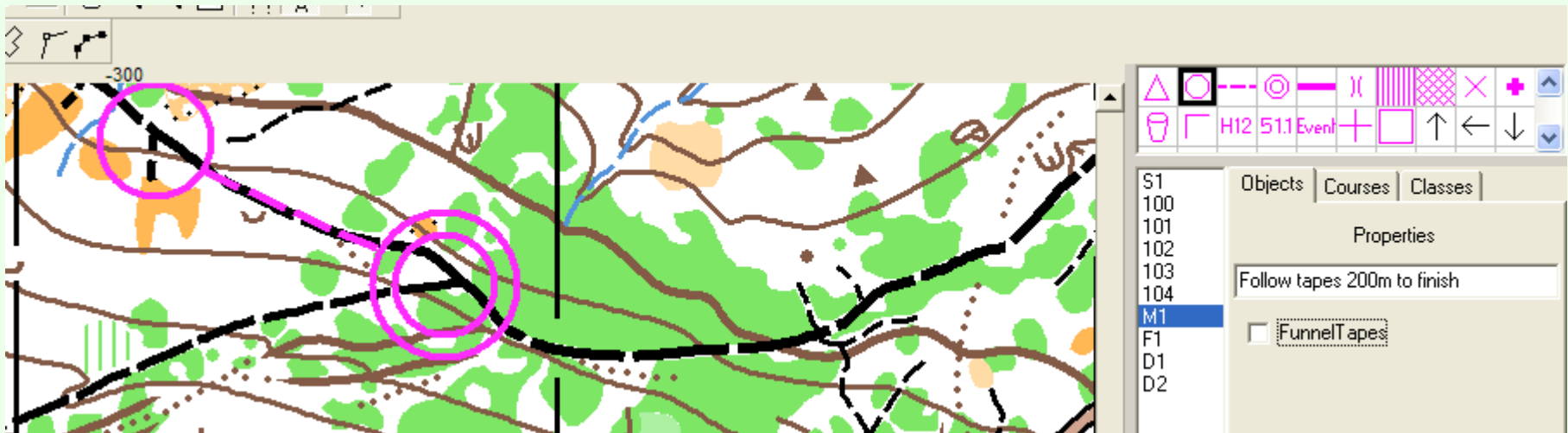
Adding marked routes

- This is the way to add a follow tapes to finish line on the text descriptions in OCAD8 (improved in OCAD9)
- Select the Objects tab and the marked route icon



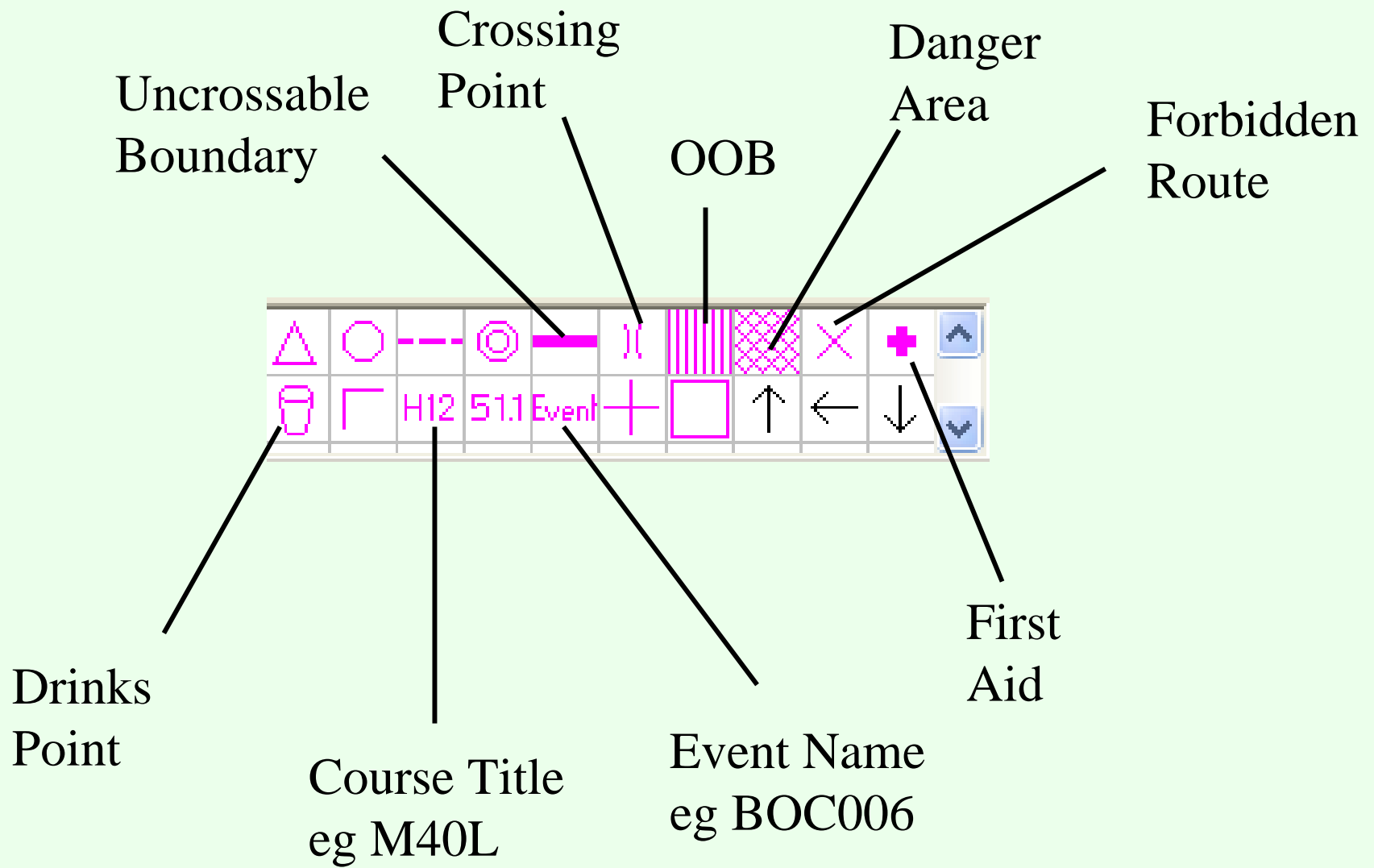
Adding marked routes ..cont

- Draw a line between the last control and the finish (some CAD / OCAD experience would help here)



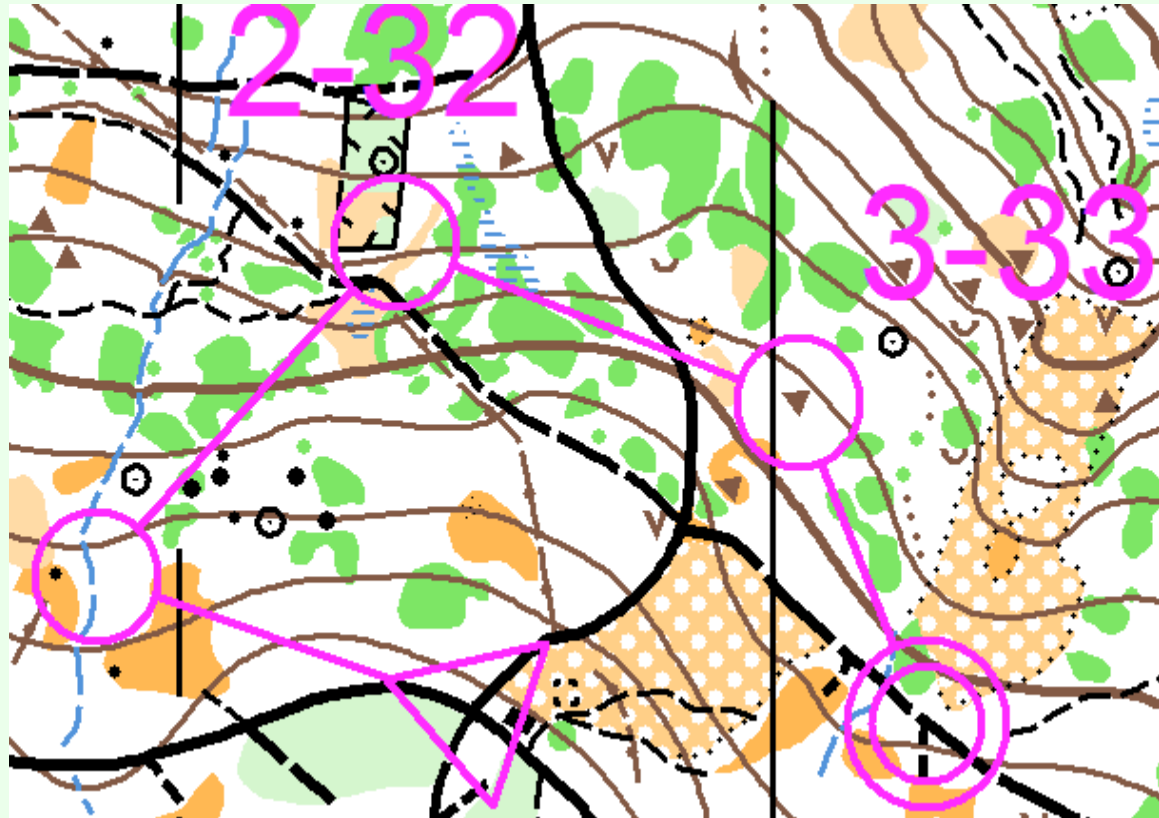
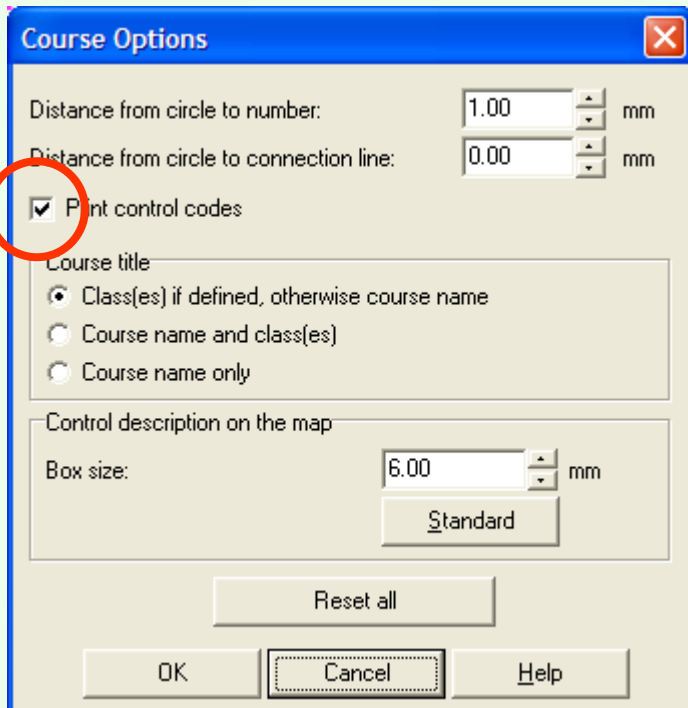
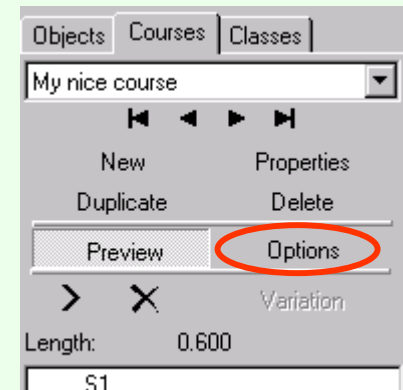
- Add M1 into your course between the last control and the finish

Adding other objects to the map



Displaying control codes on the map

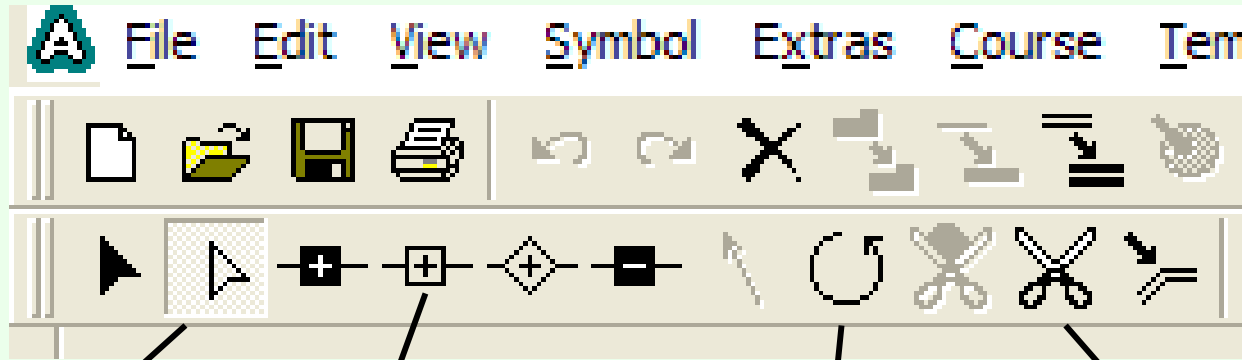
- Useful for certain events
- Click on course options button
- Select 'Print control codes' box



Improving print clarity

- Make sure that the control numbers are clearly positioned and don't obscure important detail
- To avoid the control circles and lines hiding detail several options are possible
- set **View > Transparent map**. This way the purple overprint will merge nicely with the details beneath (rather than hiding them). Note that this can cause some printers to print more slowly (first copy only). Note that it is possible to have the circles and lines merge but not the numbers – but that is beyond the scope of this presentation.
- **Break the circles and/or connecting lines**. Requires some experience of CAD/OCAD but quite easy to master

Cutting, moving, turning



Move ends of connecting lines around

Add turning point in connecting line allowing you to divert the line around OOB etc

Rotate objects such as crossing points

Cut gaps in connecting lines or control circles

Use help function to find out how to use these tools

Printing

- File > Print
- Check map and print scales agree
- Check landscape vs portrait
- Select course(s) to print and number of copies
- In the options tab make sure that the print grid box is not selected
- Colours can be tweaked for a given printer – not for the novice though.

Printing loose control descriptions

- File > Print control descriptions
- Check IOF or Text
- For IOF check box size – smaller box for courses with many controls
- For web publication try and use a utility that will allow you to ‘print’ to a .pdf file.

Exporting course information

- To allow import into OE200X etc
- File > export courses
- This will prompt you to save the information as a text file.

Good luck!

- OCAD8, and in particular OCAD9 has greater functionality than discussed today
- Play with other features yourself
- Alistair Mackenzie has a more detailed OCAD manual on the CLOK website (look in the members area)